

DROP-OFF LOCATIONS

AURORA

- 1155 Main/Importing Street
Next to Aurora Utilities
- 10700 Prospect Lane, in the parking lot of the recycling center

BRIGHT

Bright Meadows Park, Einsel Road

DILLSBORO

13030 Executive Drive, in the parking lot behind the Town Hall

GREENDALE

Rand Street behind Greendale Park, next to the city garage

NO. DEARBORN ROAD

5687 No. Dearborn Road in the parking lot of North Dearborn Elementary School

LAWRENCEBURG

400 High Street in the gravel lot next to the County Emergency Management Office

NEW ALSACE

200 Legion Road, in the American Legion parking lot

ST. LEON

28870 St. Joe Drive (SR1) behind the fire department

MANCHESTER

11636 County Farm Road next to the Y.E.S. Home

Have questions?

Not sure if something is recyclable?

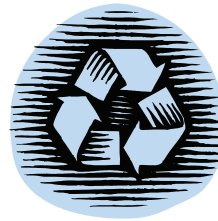
Please feel free to contact us!

Do you have other items that can be recycled but are not accepted at the drop-off sites?

Our drive-thru is open :

Fridays Noon to 6 p.m.

Saturdays 9 a.m. to 1 p.m.



DEARBORN COUNTY RECYCLING CENTER

10700 Prospect Lane
Aurora, IN 47001

3 miles west of Aurora on Route 50

Phone: (812) 926-9963

Fax: (812) 926-9668

Email: dcswmd@dearborncounty.in.gov

DEARBORN COUNTY RECYCLING CENTER



DROP-OFF SITE INFORMATION

We understand that you may have time constraints, busy schedules or are just unable to bring your recyclables to the Recycling Center. Therefore, we have 10 drop-off sites conveniently located throughout the county. The drop-off sites are open 24 hours per day 7 days per week.



Items that can be recycled at the drop-off sites



Aluminum Food Containers

- Please empty, rinse, drain, and crush or flatten.
- ONLY food or beverage containers.



Example: soda cans, beer cans.

Glass (Clear or Colored)

- ONLY food or beverage containers.
- Empty, rinse and drain.
- NO broken glass.
- NO window glass.
- NO ceramics.



Metal Cans (tin)

- Food or beverage containers only.
- Empty, rinse and drain.
- Including metal caps or lids.
- NO foil, pie plates, loaf pans and other aluminum items. No other metal items in with cans.



Plastic



- Discard caps, lids, pumps, and rings.
- Empty, rinse, drain, and flatten if you can.

Important: Containers with small mouths only.



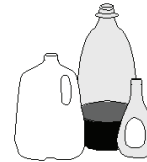
Example: soda bottles, bottled water, clear juice bottles.

Plastic



- Discard caps, lids, pumps, and rings.
- Empty, rinse, drain, and flatten if you can.

Important: Containers with small mouths only.



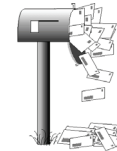
Example: laundry detergent, bleach, ketchup, mustard, and personal care products.

We can **NOT** accept containers which held motor oil, cooking oil, salad dressing or margarine containers.



Mixed Paper

Includes junk mail, office paper, magazines, catalogs, paper board, and phonebooks.



- Remove wax liners and flatten.
- Remove plastic wrap on phonebooks and magazines.

Example: cereal & tissue boxes, toilet paper and paper towel rolls, beverage boxes.

Corrugated

(Note: corrugated has ridges & furrows)

- Flatten boxes.



Important: Clean and dry only!

Newspaper

- Including glossy inserts found inside.

Important: Clean and dry only!

